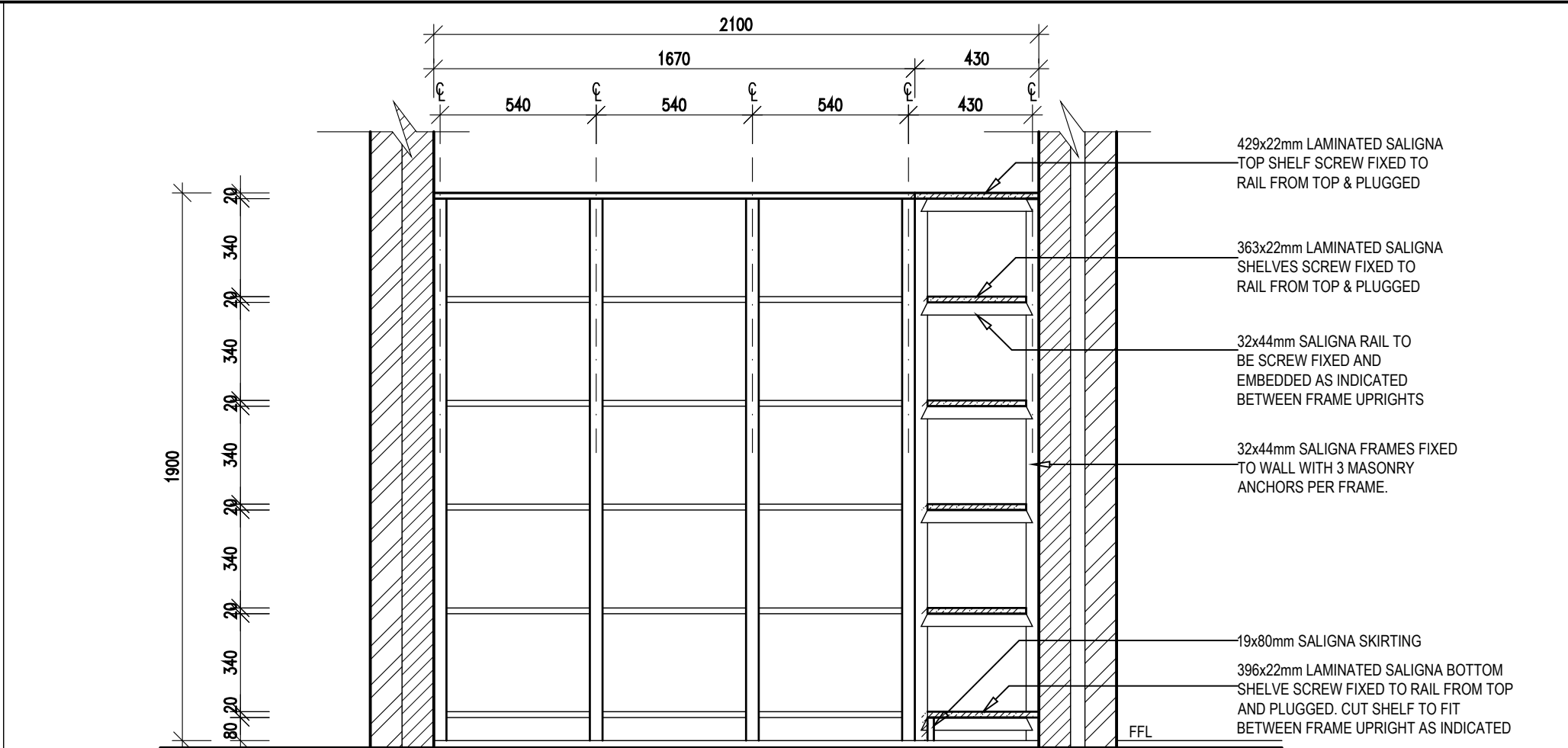
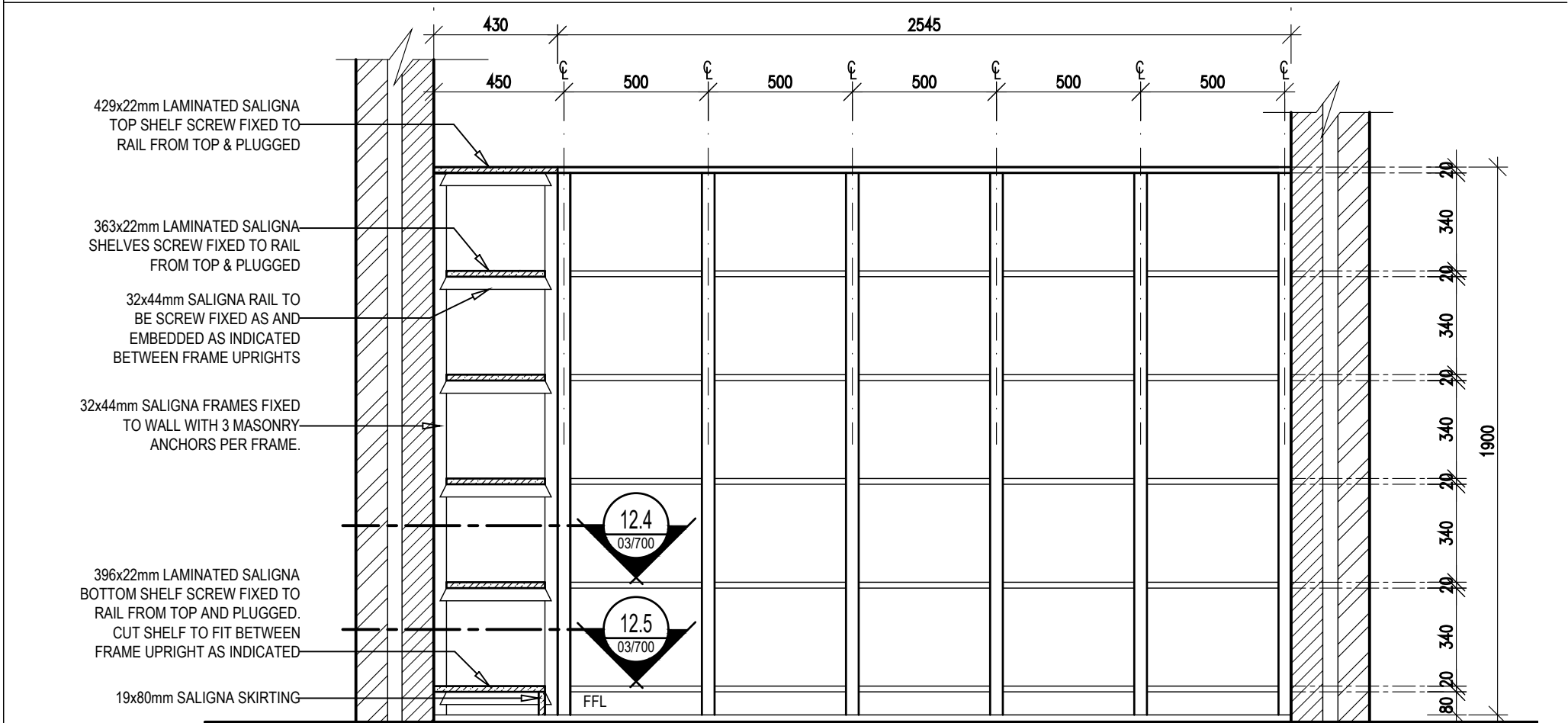


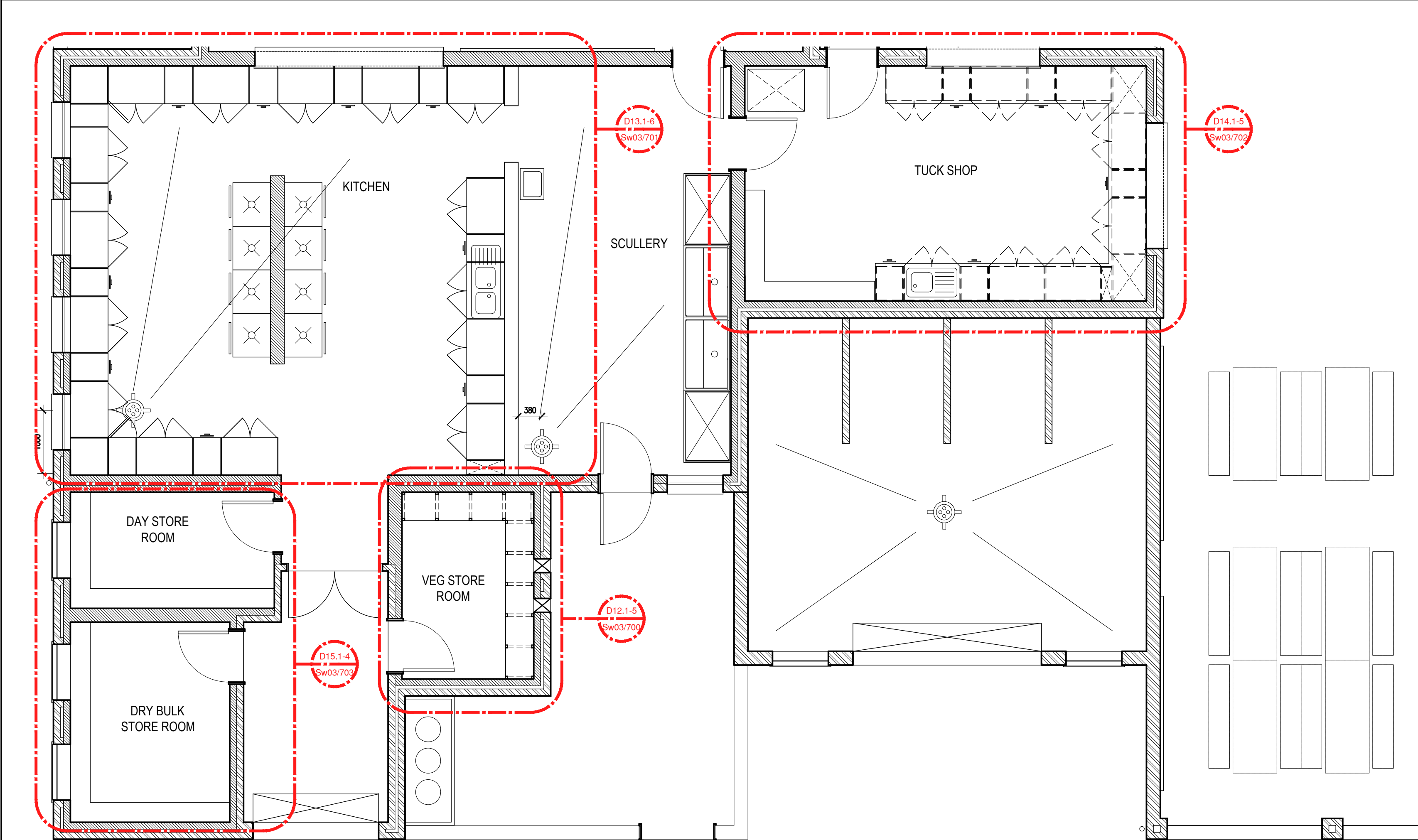
DETAIL 12.1: VEG STORE ROOM PLAN SCALE 1:20



DETAIL 12.2: VEG STORE SHELVING SECTIONAL ELEVATION A SCALE 1:20

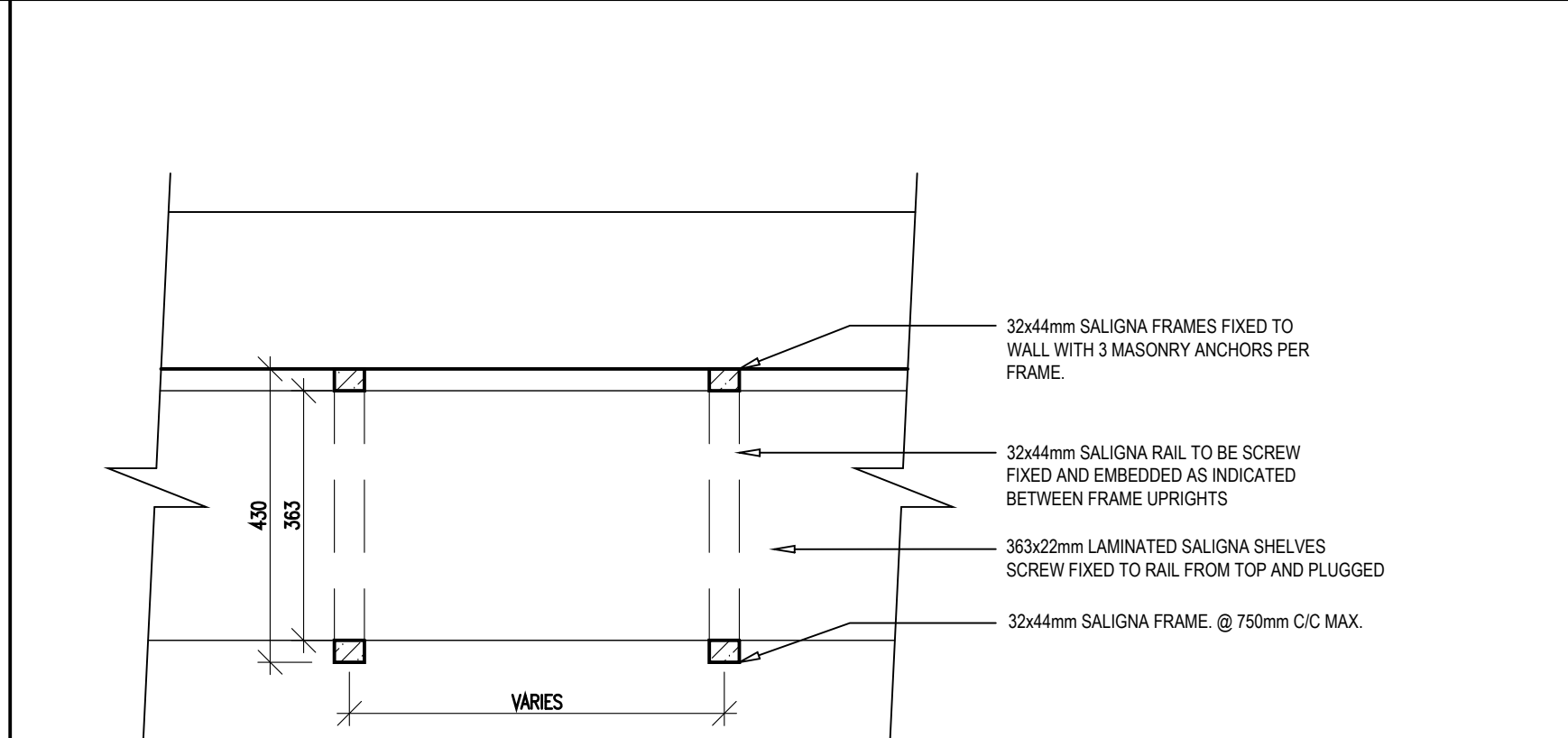


DETAIL 12.3: VEG STORE SHELVING SECTIONAL ELEVATION B SCALE 1:20

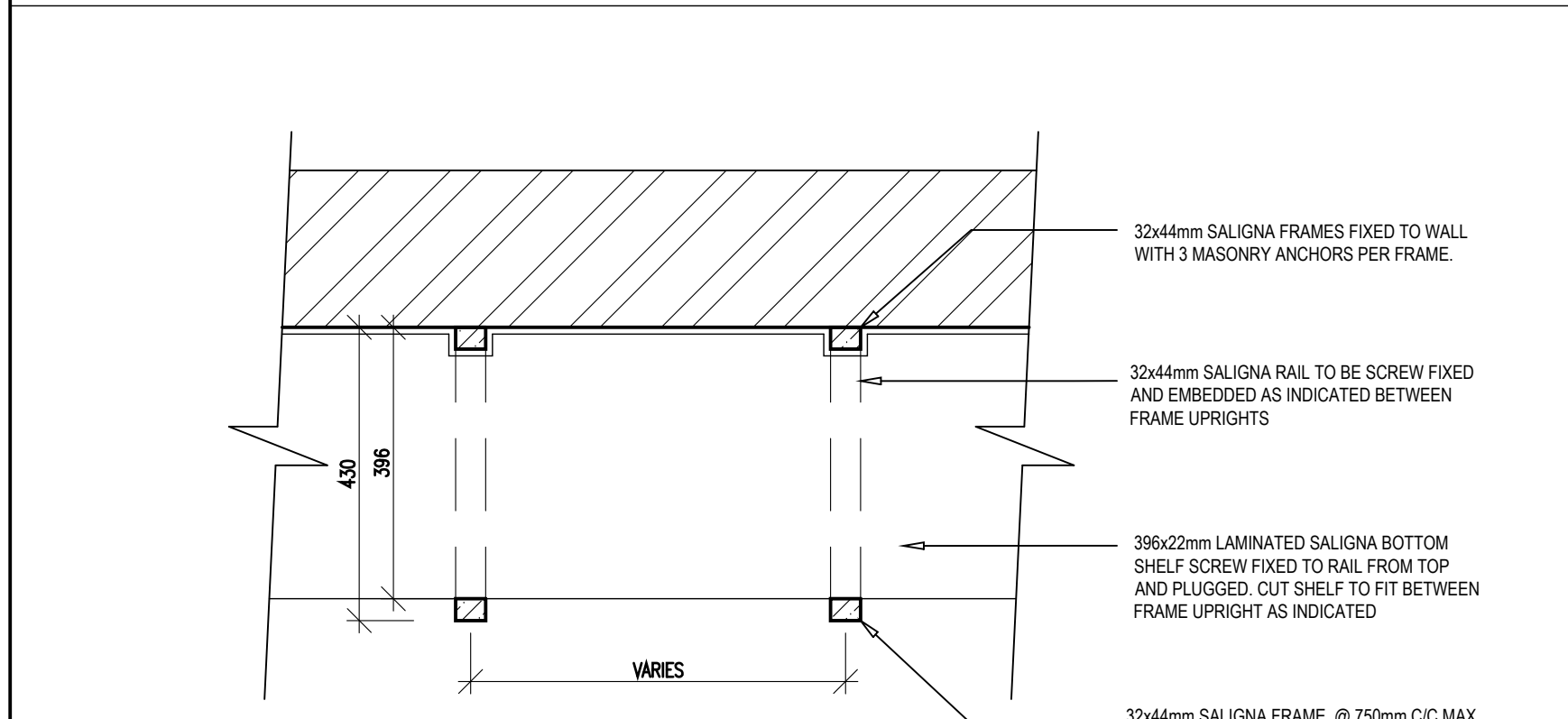


PLAN SCALE 1:50

NUTRITION CENTRE KEY PLAN



DETAIL 12.4: VEG STORE SHELVING - SHELF DETAIL SCALE 1:10



DETAIL 12.5: VEG STORE SHELVING - BOTTOM SHELF DETAIL SCALE 1:10

VEG STORE ROOM SHELVES

GENERAL SPECIFICATIONS;			
DAY AND BULK STORES/ADJUSTABLE SHELVING			
WALL BANDS: POWDER COATED MILD STEEL WALL BAND HEIGHTS AS INDICATED ON PLANS @ MAX 600mm C/C			
STEEL BRACKETS: POWDER COATED MILD STEEL BRACKETS 300mm			
SHELVING: 16mm THICK x 300mm WIDE LAMINATED S.A PINE (LENGTHS ACCORDING TO DETAIL LAYOUT)			
MODULAR STEEL SHELVING: STEEL SHELVES AND SLOTTED STEEL ANGLE POSTS AND CROSS BRACES ON SIDES			
KITCHEN			
CUPBOARD SPEC NOTE			
CUPBOARD CARCASSES TO BE 16mm DOUBLE FACED BISONBOARD WITH WHITE MELAMINE FINISH. CUPBOARD DOORS TO BE 16mm DOUBLE FACED BISONBOARD WITH WHITE MELAMINE FINISH. SQUARE EDGED WITH 3mm WHITE PVC EDGING ALL ROUND			
GRANITE COUNTER TOPS TO BE 30mm THICK COUNTER TOPS TO HAVE 50mm HIGH GRANITE SKIRTING			
VEG STORE			
FIXED SHELVES			
ALL SALIGNA BOARDS TO BE SLIGHTLY ROUNDED, THOROUGHLY SANDED AND VANISHED WITH CLEAR PLASCON VARNISH			
WORKSHOP DRAWINGS TO BE SUBMITTED TO ARCHITECT BEFORE ANY WORK COMMENCES.			

NO.	DATE	REVISION	DRAWN
A	2021-03-01	ISSUED FOR INFORMATION	DW RJS
B	2022-07-08 2022-04-13	ISSUED FOR MEASURE ISSUED FOR INFORMATION (EFMS) 1. DWG NO. CHANGED FROM 1617 TO 2204	DW

ISSUED FOR APPROVAL

KEY			
PSP			
ARCHITECT			
		13 Cumberland Street, Mithatha P.O. Box 7185 Mithatha, 5100 Tel: 041 532 0382 Fax: 086-648-2131 18 Lower Goldenhays Drive, Emmanuel, Johannesburg P.O. Box 91824 Auckland Park, 2006 Tel: 011-486-2623 Fax: 086-648-1935 Email: mpande@architect.co.za	
ARCHITECTURAL PROFESSIONAL SACAP NUMBERS: H.L. MANTEL SACAP 3045			
IMPLEMENTED BY			
INDEPENDENT DEVELOPMENT TRUST			
SIGNATURE		DATE	SHEET SIZE
DESIGNED	-	-	A1
DRAWN	SG	-	SCALE 1:100
VERIFIED	-	-	STATUS LISTED: FM = FOR MEASURE T = TENDER C = CONSTRUCTION AB = AS BUILT CO = CO-ORDINATION
VALIDATED	-	-	
CLIENT		IMPLEMENTING AGENT	
PROJECT DOE PORTFOLIO PROGRAMME ESTABLISHMENT OF NEW SCHOOLS HILLBROW - SENIOR SECONDARY SCHOOL PROVINCE: EASTERN CAPE PROVINCE DRAWING TITLE NUTRITION CENTRE (LARGE) (BLOCK S-C) JOINERY DETAILS PART 1 OF 4 - VEG STORE DRAWING DESCRIPTION -			
Stand Co-Ordinate:			
EMIS NUMBER		DISCIPLINE	
200500293		ARCH	
DRAWING NUMBER		STATUS/REVISION	
2204 w07-03/700		FA B	